

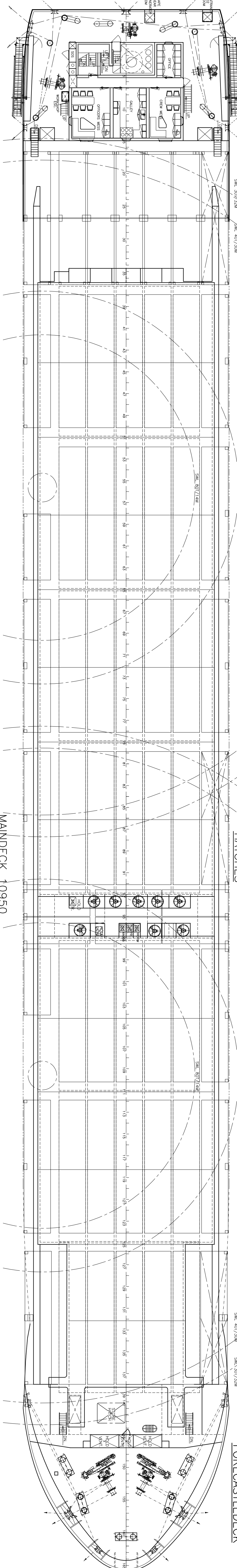
PROFILE

POOPDECK 13750

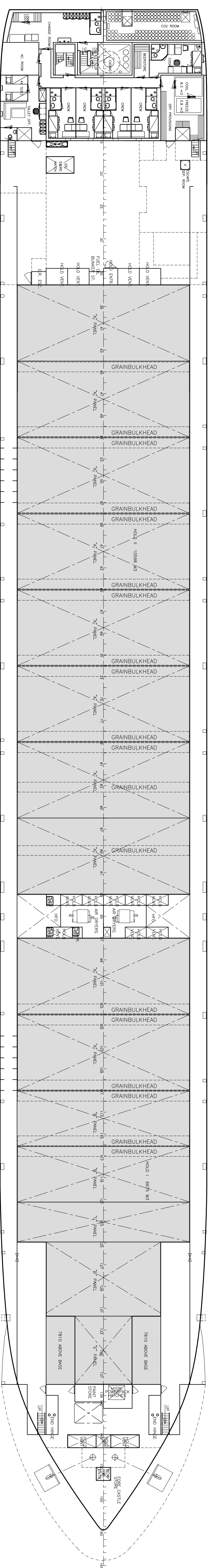
HATCHES

FORECASTLEDECK

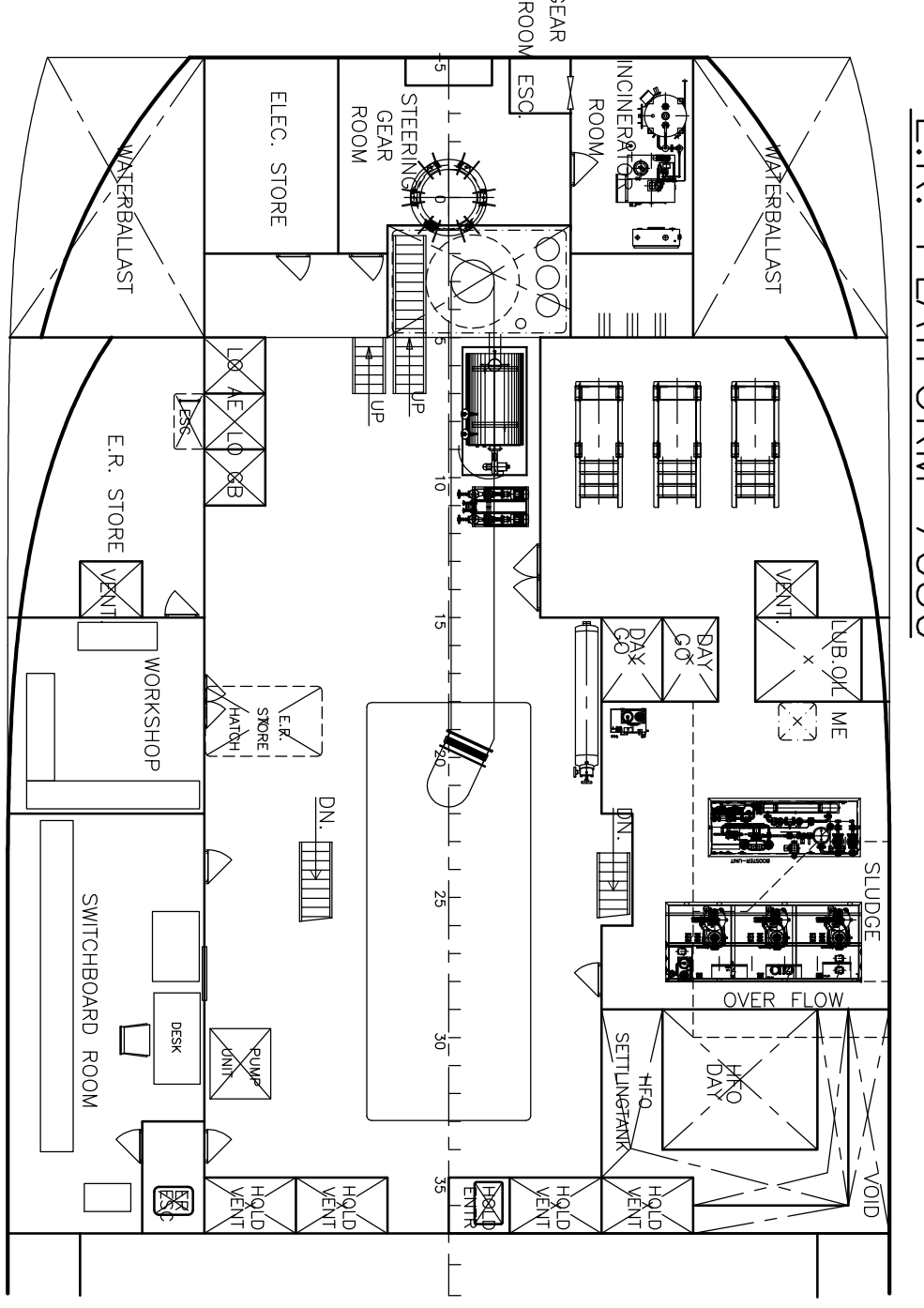
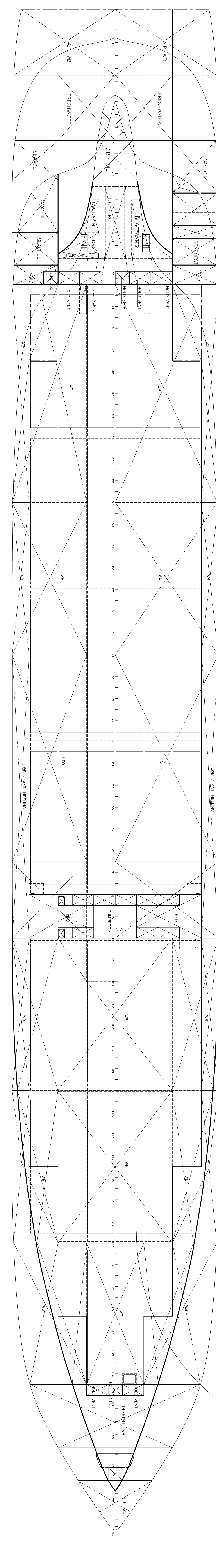
E.R. PLATFORM 7050



MANDECK 10950



TANKTOP 1300



**DAMEN**  
**COMBI FREIGHTER 12000**

**Dimensions**

- Length o.d. : 142,950 m
- Length i.l. : 134,965 m
- Beam mid. : 18,850 m
- Depth mid. : 10,95 m
- Decoweight (w/mandeck excl) : 12,000 t
- Gross Tonnage : 8999 GT
- Net Tonnage : 4800 NT

**Capacities**

- Hold 1 : 6675 m<sup>3</sup> = 235,725 cuft
- Hold 2 : 10598 m<sup>3</sup> = 374,288 cuft
- Heavy Fuel Oil : 1765 m<sup>3</sup> = 629,990 cuft
- Ballast Water : 4790 m<sup>3</sup>
- Fresh Water : 83 m<sup>3</sup>
- Oil : 50 m<sup>3</sup>
- Containers hold : 312 TEU
- Containers hatch : 372 TEU
- Containers total : 684 TEU

**Performance**

- Speed 15,50 kn at 7,80 m design draft with 90% MCR output, 200 kW PRO
- Main Engine 6000 kW (100% MCR)

**DAMEN SHIPYARD CARROVESSELS**

P.O. Box 1, 4200 AA Gorinchem - Holland  
 Tel: +31 (0) 83 63 93 33 - Fax: +31 (0) 83 63 94 88  
 Telex: 25355 Damsnl nl



REV	ALTERATION	BY	DATE
J	GENERAL UPDATE	ASB	30-06-04
I	GENERAL UPDATE	ASB	04-06-04
D	GENERAL UPDATE	ASB	31-03-04
C	SHORTENED TO FRAMES	ASB	18-12-03
B	GENERAL UPDATE	ASB	08-12-03
A	GENERAL UPDATE	ASB	07-10-02

SCALE	DATE	DESIGNER	APPROVER
1:50	07-08-02	DSV	ASB

TITLE	BRNAN BY	OWNER
GENERAL ARRANGEMENT	DSV	ASB

PROJ. NO.	BRNAN BY	OWNER
0836 - 000 - 001	DSV	ASB